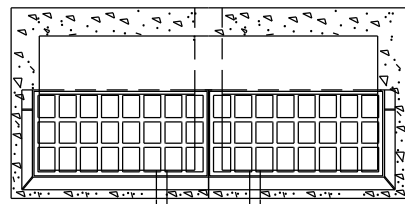
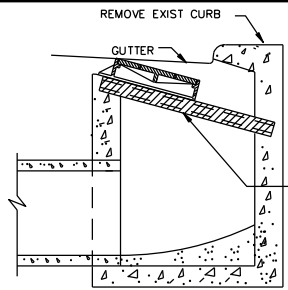


STEP: 1 EXIST TYPE "B-B" INLET



TOP VIEW

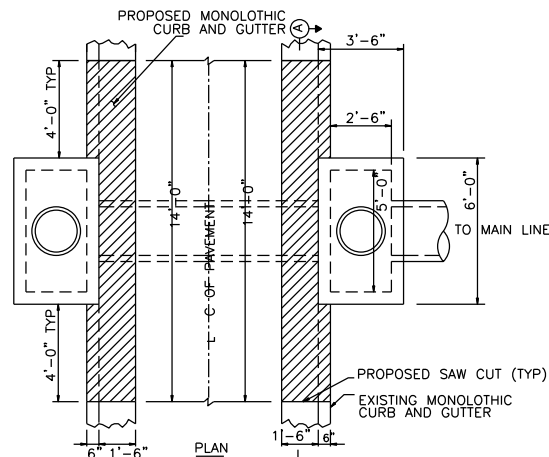


SIDE VIEW

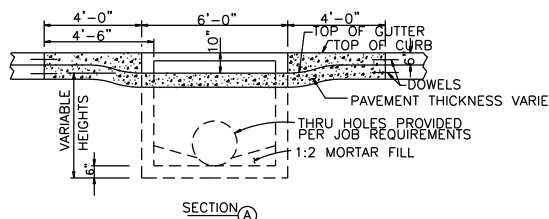
EXIST "I" BEAM

NOTES:

- FOR TYPE "C-2A" INLETS PROVIDE A CENTER 6"x6" COLUMNS IN THE CURB LINE BETWEEN ALL EXTENSIONS.
- WALLS TO BE 6" IF BUILT WITH REINFORCED CONCRETE. WHEN BUILT WITH BRICK WALL USE STRAIGHT WALL IN BACK WITH 5" REINFORCED CONCRETE TOP SLABS. DOWELLED INTO BRICK WALLS WITH # 4 X 8" @ 12.
- DIMENSIONS NOTED WITH A ? ARE TO BE SPECIFIED BY THE PROJECT ENGINEER ON THE PLANS.

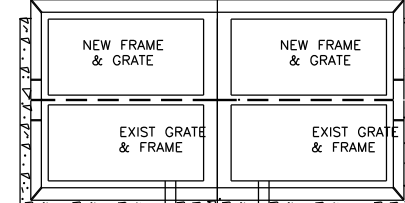


PLAN

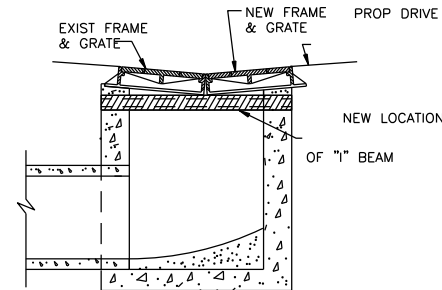


SECTION A

STEP: 2



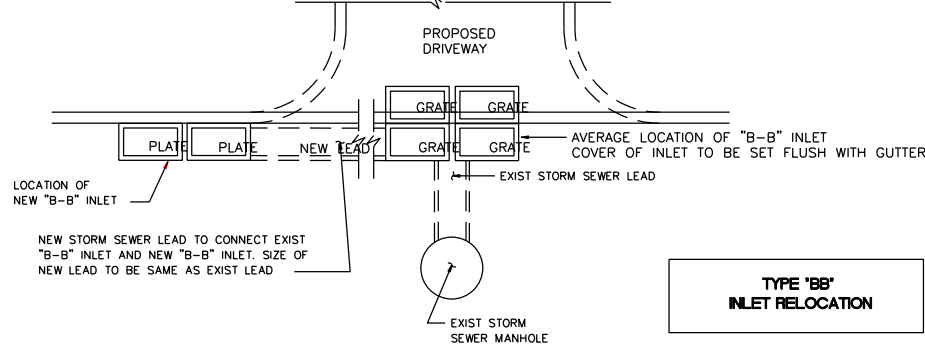
TOP VIEW



SIDE VIEW

- AFTER REMOVING EXIST CURB, RAISE EXIST "I" BEAM TO GRADE AND RESET EXIST FRAMES.
- ADD NEW FRAMES AND GRATES NEXT TO EXIST FRAMES.
- BACKFILL INLET TO A POINT ONE FOOT BEHIND THE CURB WITH 1 SACK/TON CEMENT STABILIZED SAND.

STEP: 3 CONSTRUCT NEW TYPE "B-B" INLET ON CURB RETURN OF PROPOSED DRIVEWAY



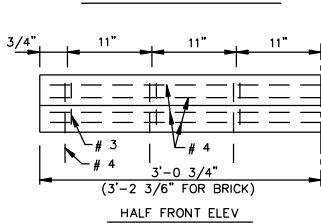
TYPE 'BB' INLET RELOCATION

PRECAST TYPE 'H-2' INLET FOR CURBED STREET PAVEMENT

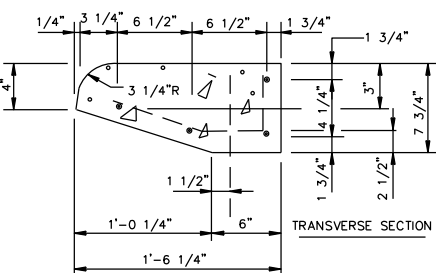
TYPE 'BB' INLET WITH GRATE TOP

CURB BEAM BAR LIST				
NO	SIZE	LENGTH	SHAPE	LOC
4	# 4	5'-10"	ST	HOR
7	# 4	0'-10"	ST	VERT
7	# 3	1'-6"	BT	

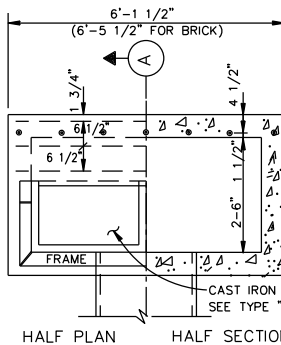
PRECAST CURB BEAM



HALF FRONT ELEV

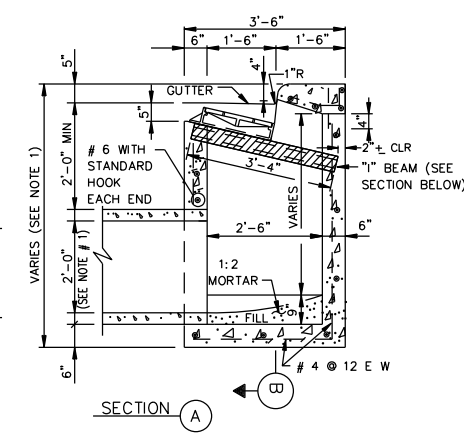


TRANSVERSE SECTION



HALF PLAN

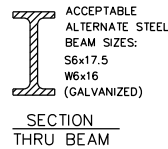
HALF SECTION PLAN



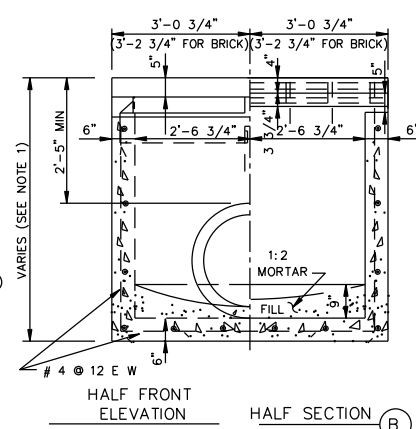
SECTION A

GENERAL NOTES:

- USE TYPE "B" CAST IRON FRAME & GRATES.
- LEAD SHALL LEAVE INLET AT LOCATION AND GRADE REQUIRED.
- WHEN BRICK INLETS ARE BUILT EXTEND DOWELS 4 INCHES FROM CURB BEAM INTO BRICKWORK.
- WHEN BRICK INLETS ARE BUILT, WALLS SHALL BE INCREASED TO 8 INCHES, AND INLET BEAMS TO BE 4 INCHES LONGER.
- DIMENSION VARIES BASED ON PIPE DIAMETER AND WALL THICKNESS.
- CENTER REINFORCING IN SLAB AND WALLS.
- CENTER STEEL BEAM ON INLET AND CAST INTO WALLS AS SHOWN.



SECTION THRU BEAM

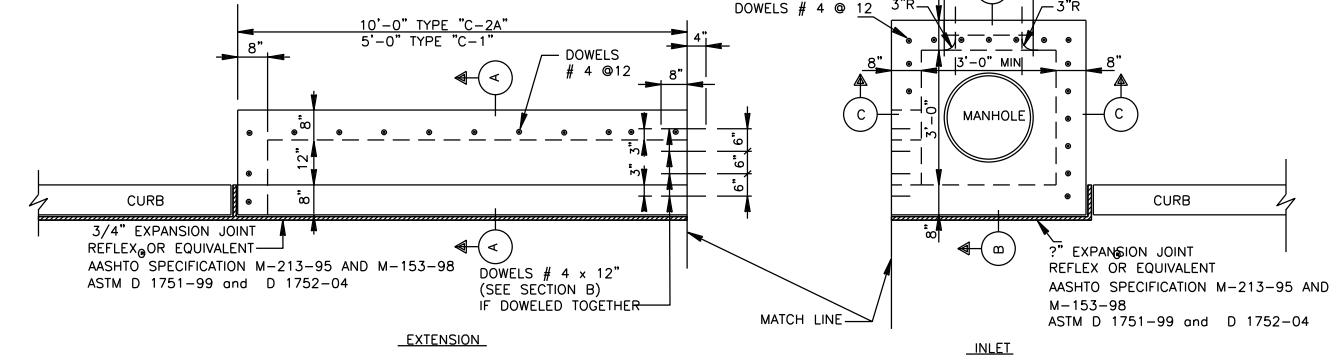


HALF FRONT ELEVATION

HALF SECTION B

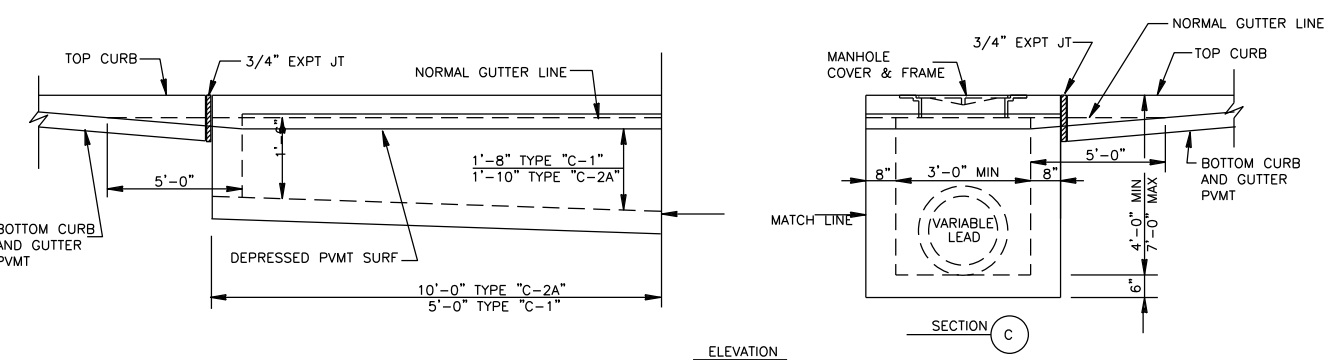
- NOTE:
- CENTER REINFORCING IN CONCRETE WALLS AND SLAB.

PRECAST TYPE 'H-2' INLET



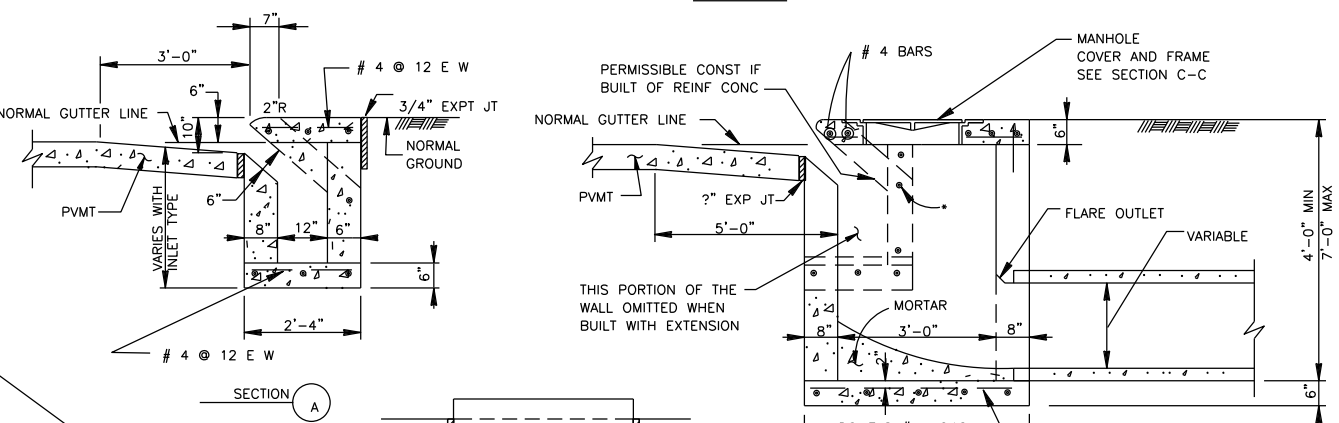
EXTENSION

PLAN



ELEVATION

SECTION C



SECTION A

SECTION B

PLAN VIEW - CURB INLET

TYPE 'C', 'C-1', 'C-2' AND 'C-2A' INLETS

GENERAL NOTES:

- TYPE "C" INLET WITH NO EXTENSION
- TYPE "C-1" INLET WITH ONE EXTENSION (5'-0" LONG)
- TYPE "C-2" INLET WITH ONE EXTENSION ON EACH SIDE
- TYPE "C-2A" INLET WITH DOUBLE EXTENSION (10'-0" LONG)



Storm Sewer Standard Details

Scale: NTS

DWG No: 300 - 04 SHEET 4 OF 4

PLACE ENGINEERING SEAL HERE