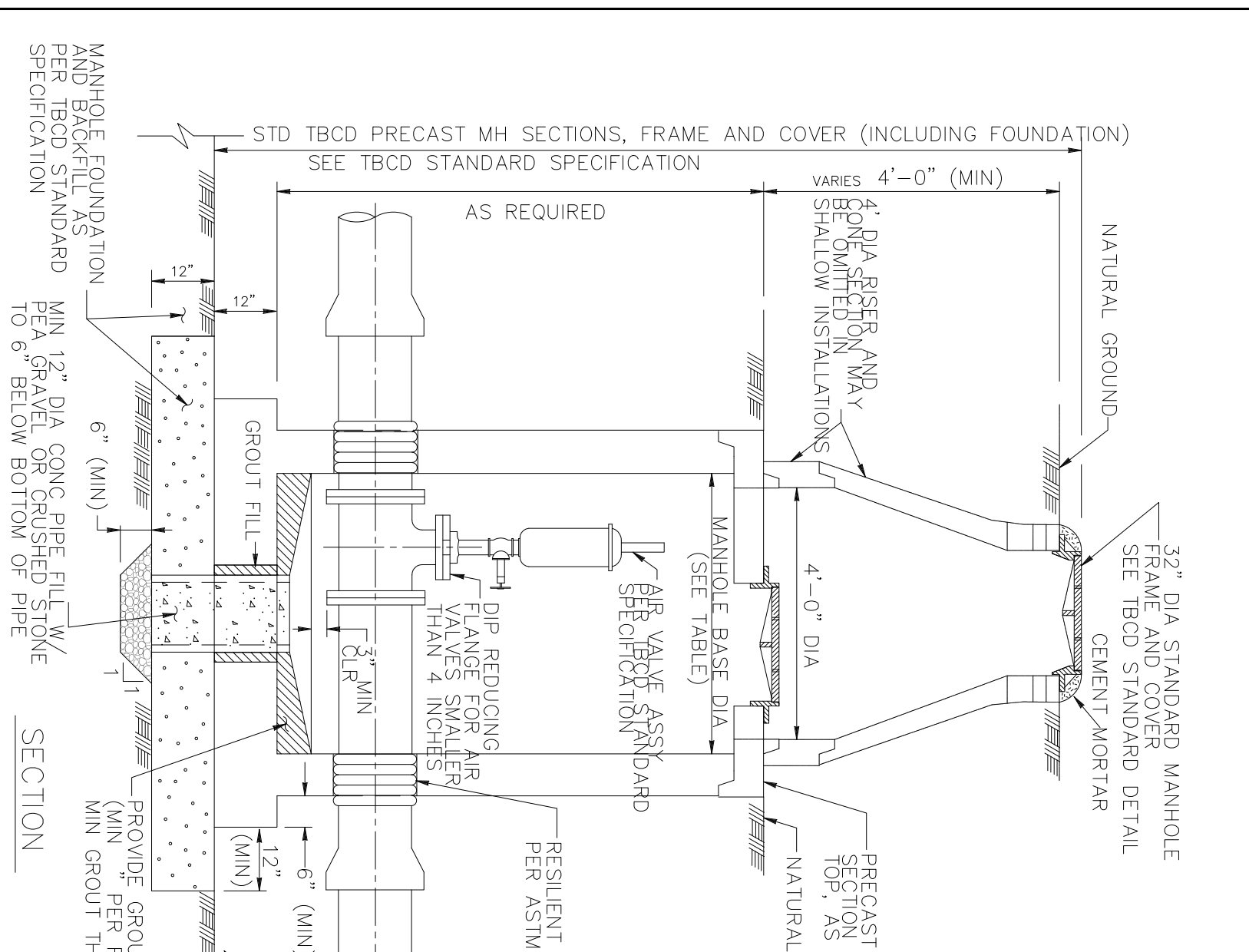
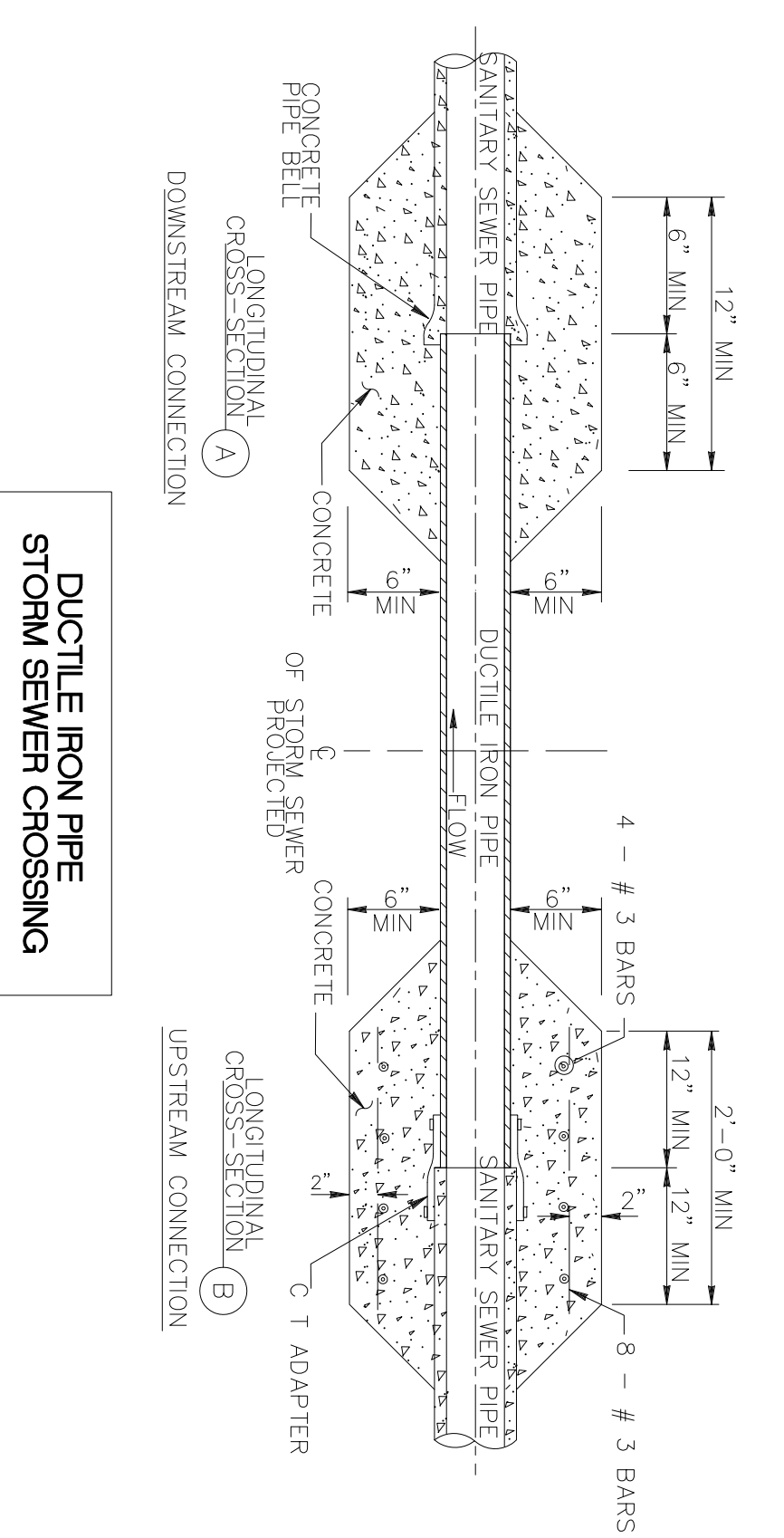
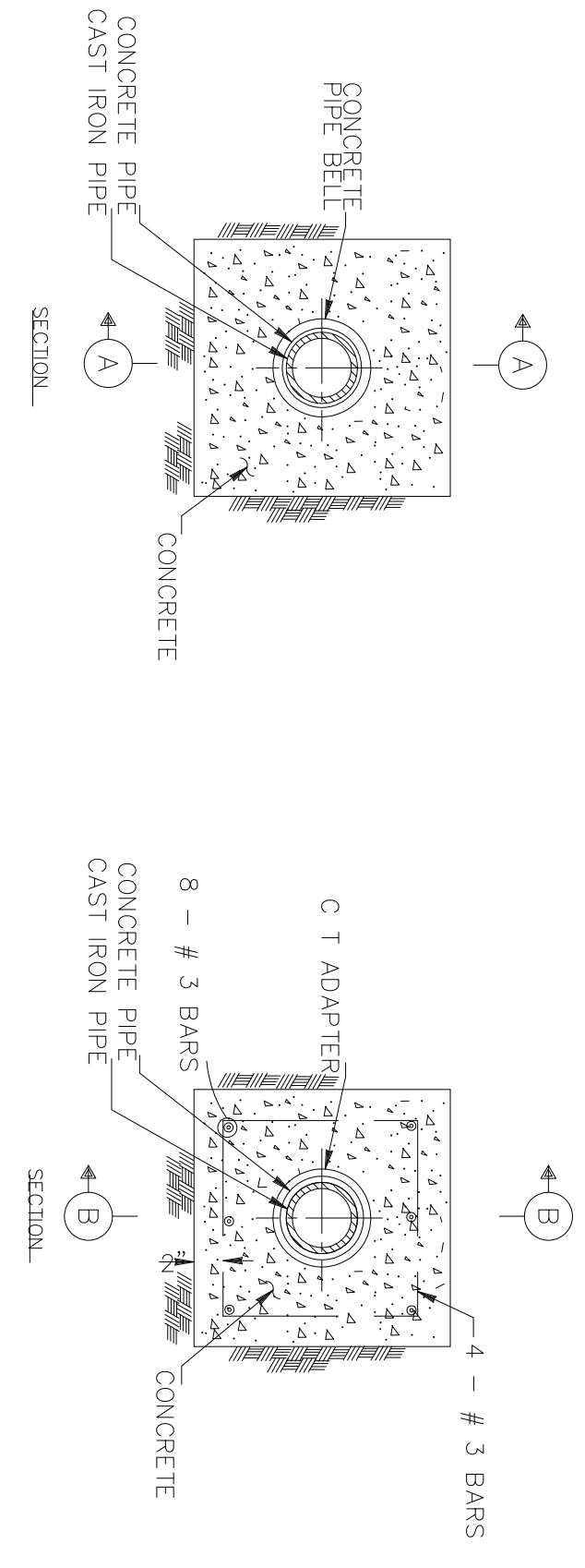


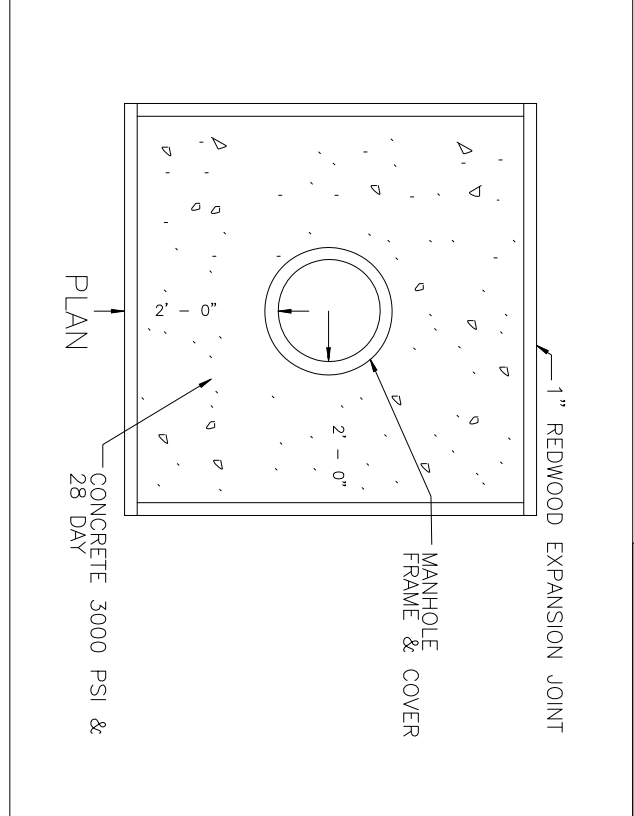
**SANITARY SEWER AIR RELEASE VALVE MANHOLE**



NOTE:  
1. THE CONTRACTOR SHALL CENTER A MINIMUM OF 18 FOOT JOINT OF DUCTILE IRON PIPE OR 900 P.V.C PIPE ACROSS THE CENTER OF THE PROPOSED STORM SEWER.



**DUCTILE IRON PIPE STORM SEWER CROSSING**



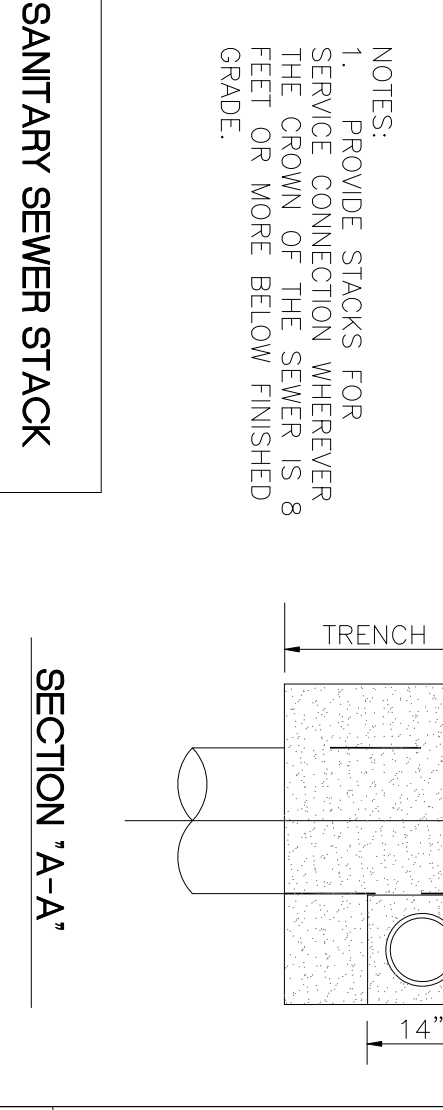
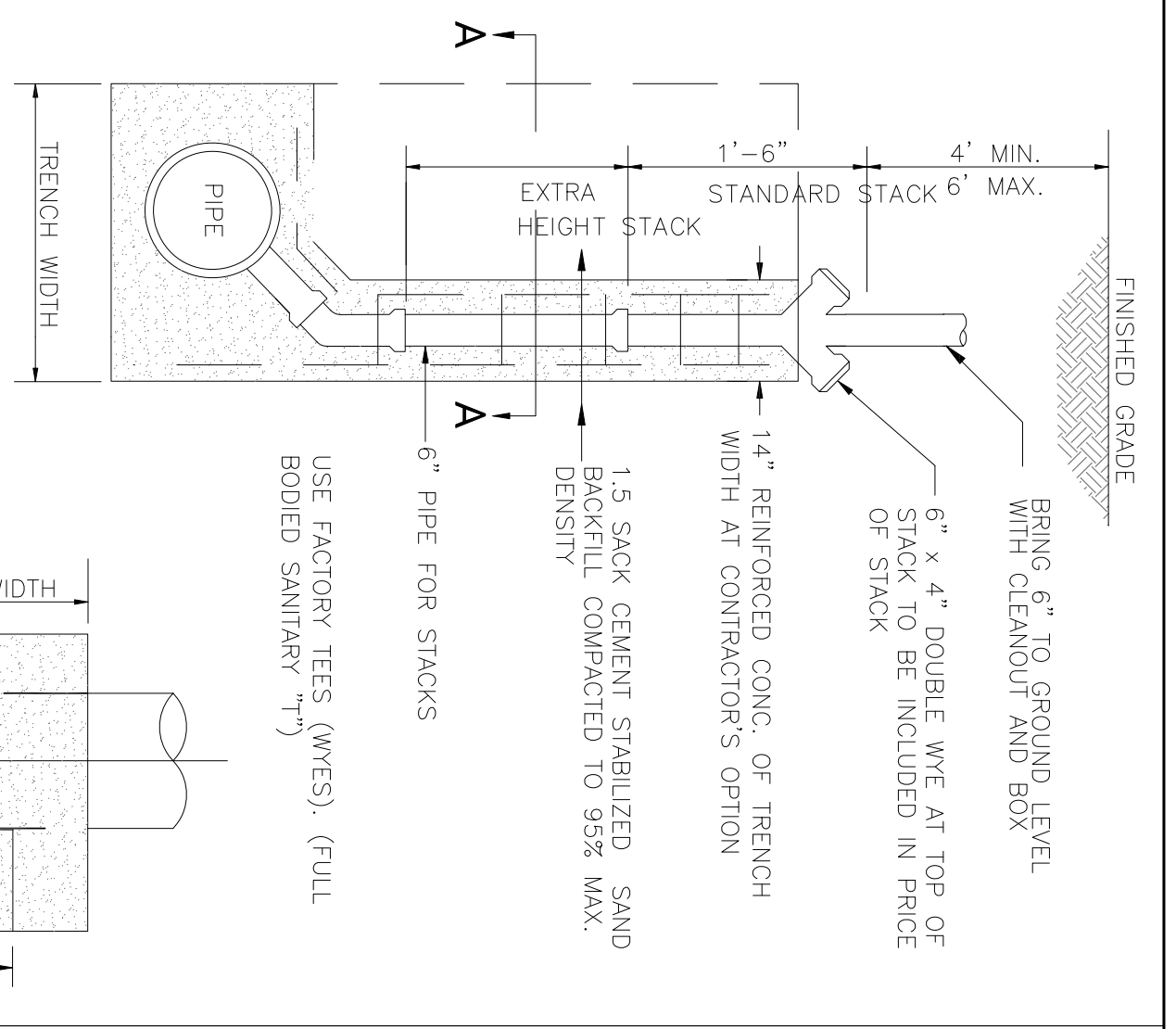
**STANDARD MANHOLE BLOCKOUT FOR CONCRETE PAVEMENT**

- NOTES:
1. AIR VALVE MAY BE AIR RELEASE OR AIR AND VACUUM AS NOTED ON PLAN AND PROFILE SHEET.
  2. SEE TB CD STANDARD SPECIFICATIONS FOR PRECAST CONCRETE MANHOLE WITH AIR VALVE. MANHOLE SHALL BE MANHOLE AS SHOWN WITH GROUVER PER ASTM STEEL WITH MANHOLE WITH 3/8\"/>
  - 3. PROVIDE 1\"/>
  - 4. MANHOLE FRAME OR FRAME WITH CONE. EMBEDDING OPENING OF FRAME TO BE PROPERLY SIDE HIGH AIR VALVE. PROVIDE VENTED MANHOLE FOR AIR AND VACUUM AS INDICATED ON THE DRAWINGS. NOTED WITH \"3\" ARE TO BE SPECIFIED BY PROJECT ENGINEER.

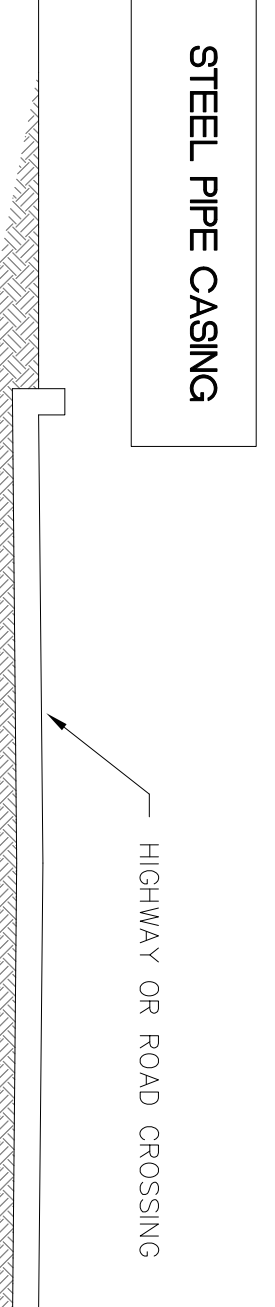
TABLE

MANHOLE BASE MAX FORCE MAIN DIA (1) (2)	MANHOLE DIA (1)	DIA (2)
8	16	18
5	12	14
3	8	10
2	6	8

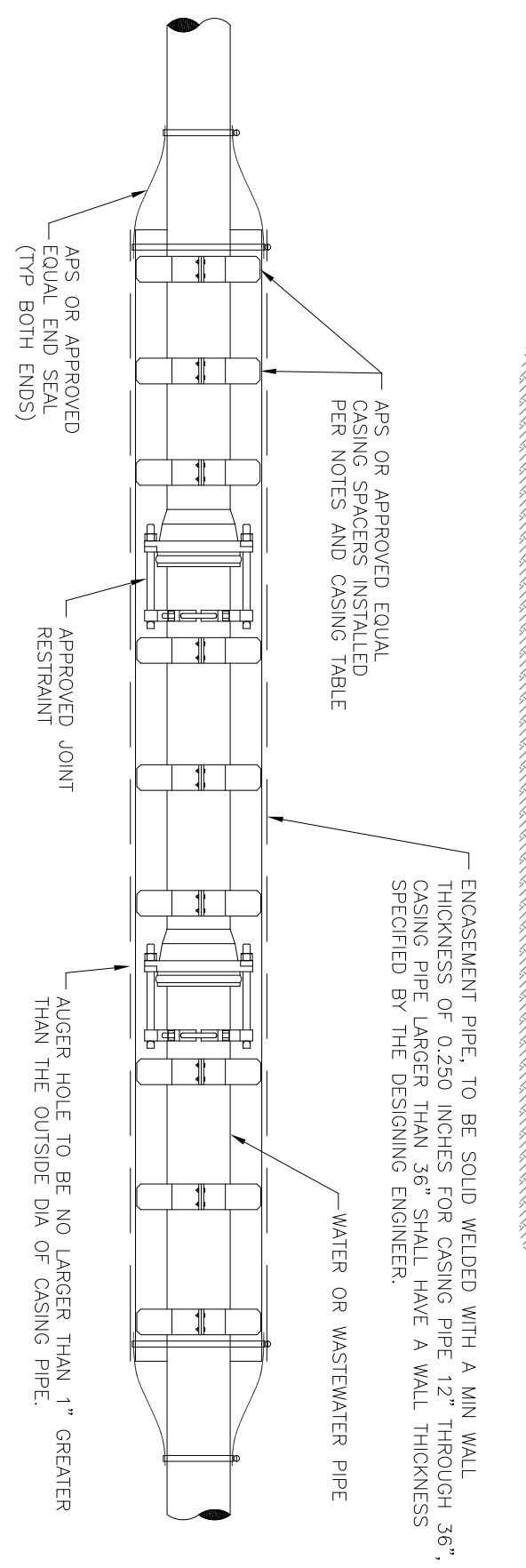
- NOTES TO SPECIFIER:
1. CHECK THAT FORCE MAIN BURIAL DEPTH AT AIR VALVE MANHOLE WILL PROVIDE 1'-0\"/>
  - 2. AIR VALVE SHALL BE MANHOLE, TOP FLY, AND VALVE SPEC ON PLAN & PROFILE SHEET.
  - 3. INCLUDE ALSO VENTED MH DETAIL FOR AIR & VACUUM VALVE INSTALLATIONS.



**SANITARY SEWER STACK**



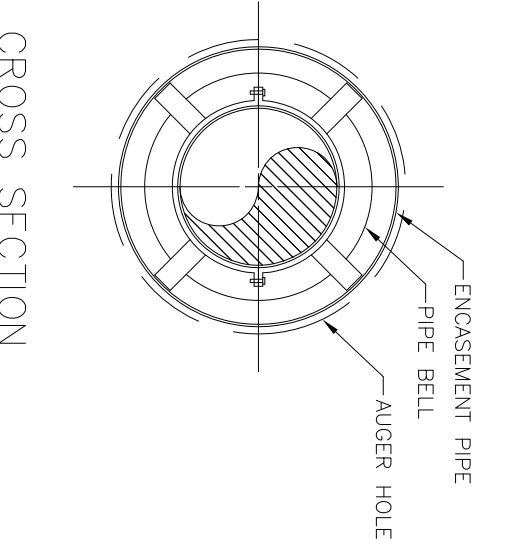
**STEEL PIPE CASING**



**LONGITUDINAL SECTION**

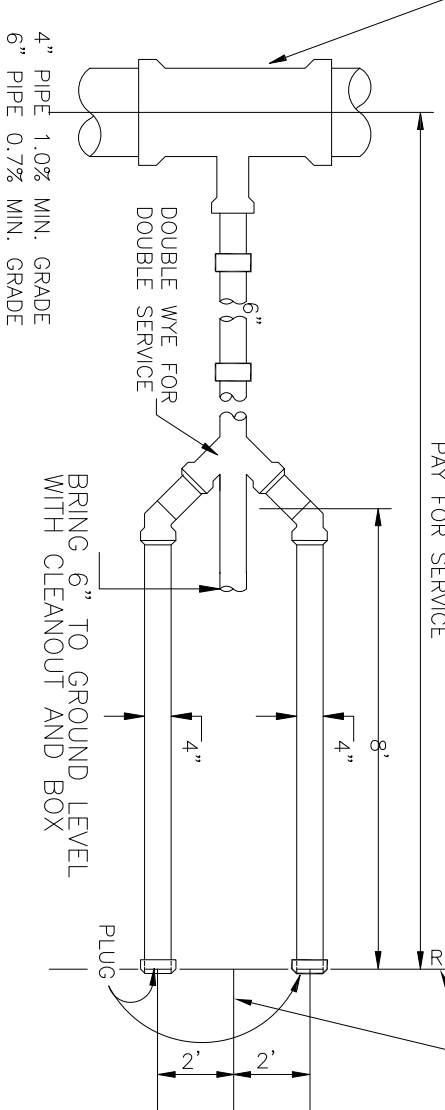
CASING TABLE

NOMINAL PIPE SIZE DIA IN INCHES	MIN CASING SIZE DIA IN INCHES	MAX SKID SUPPORT SPACING IN FEET
4	12	4.7
6	16	6.3
8	18	7.4
10	20	8.5
12	22	9.6
15	26	11.0
18	30	12.0
21	33	12.0
24	36	12.0
27	36	12.0

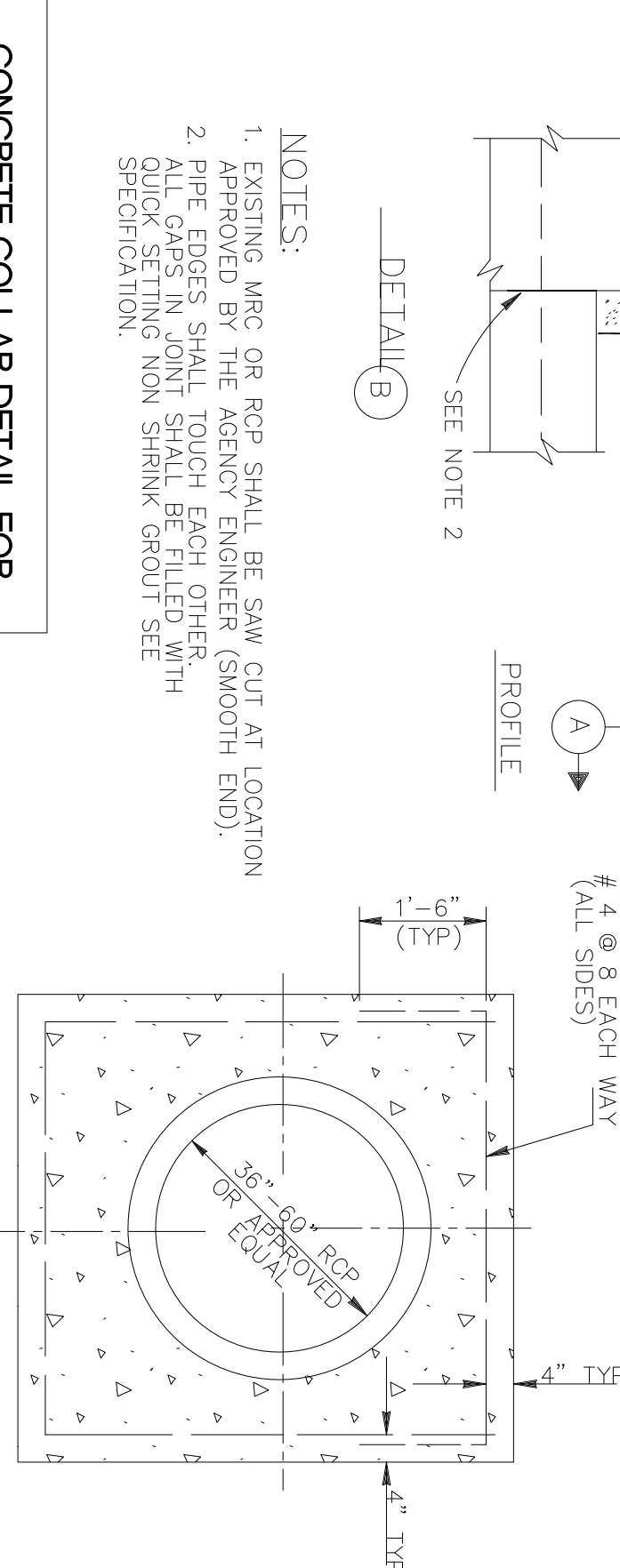
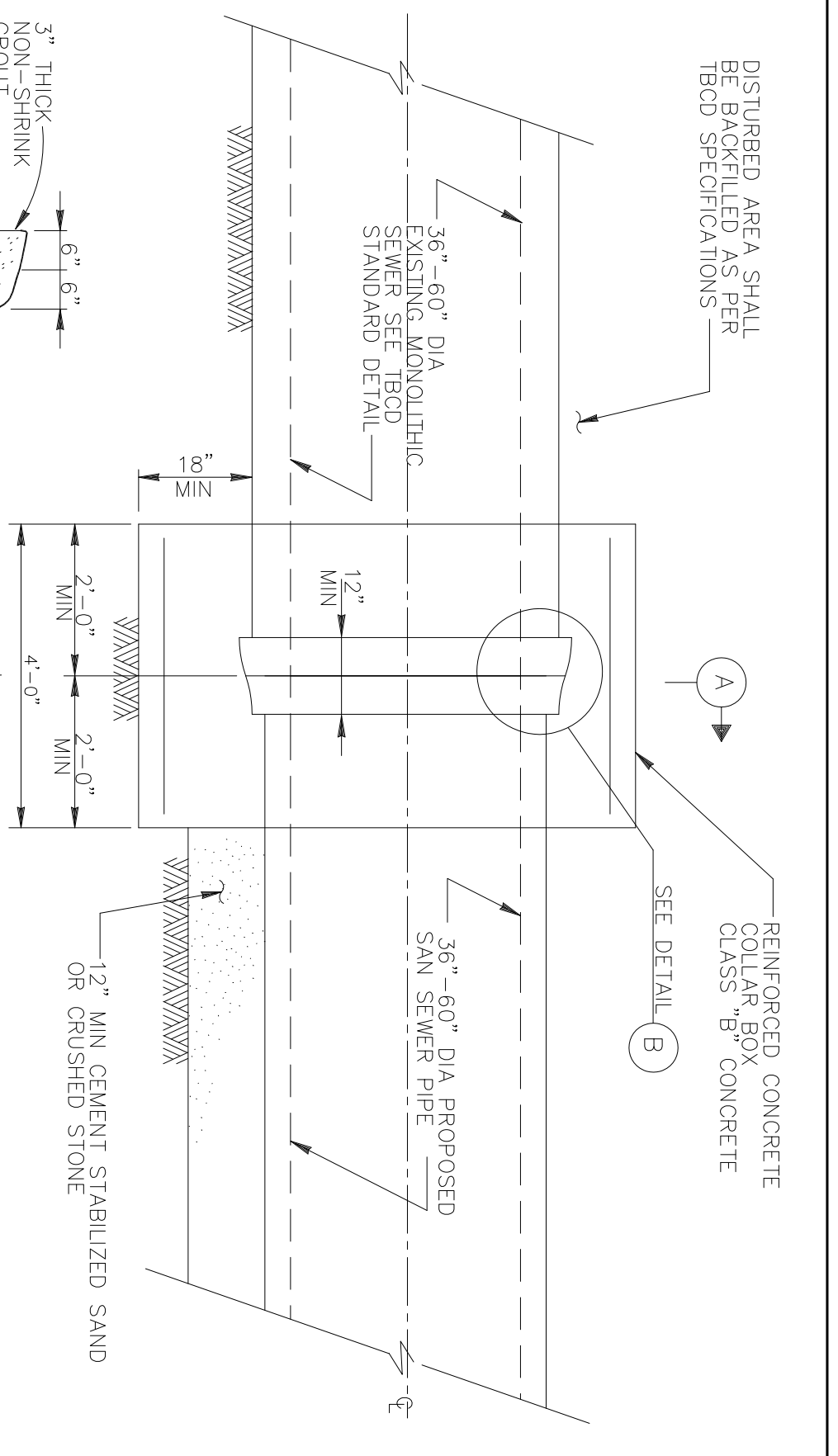


**CROSS SECTION**

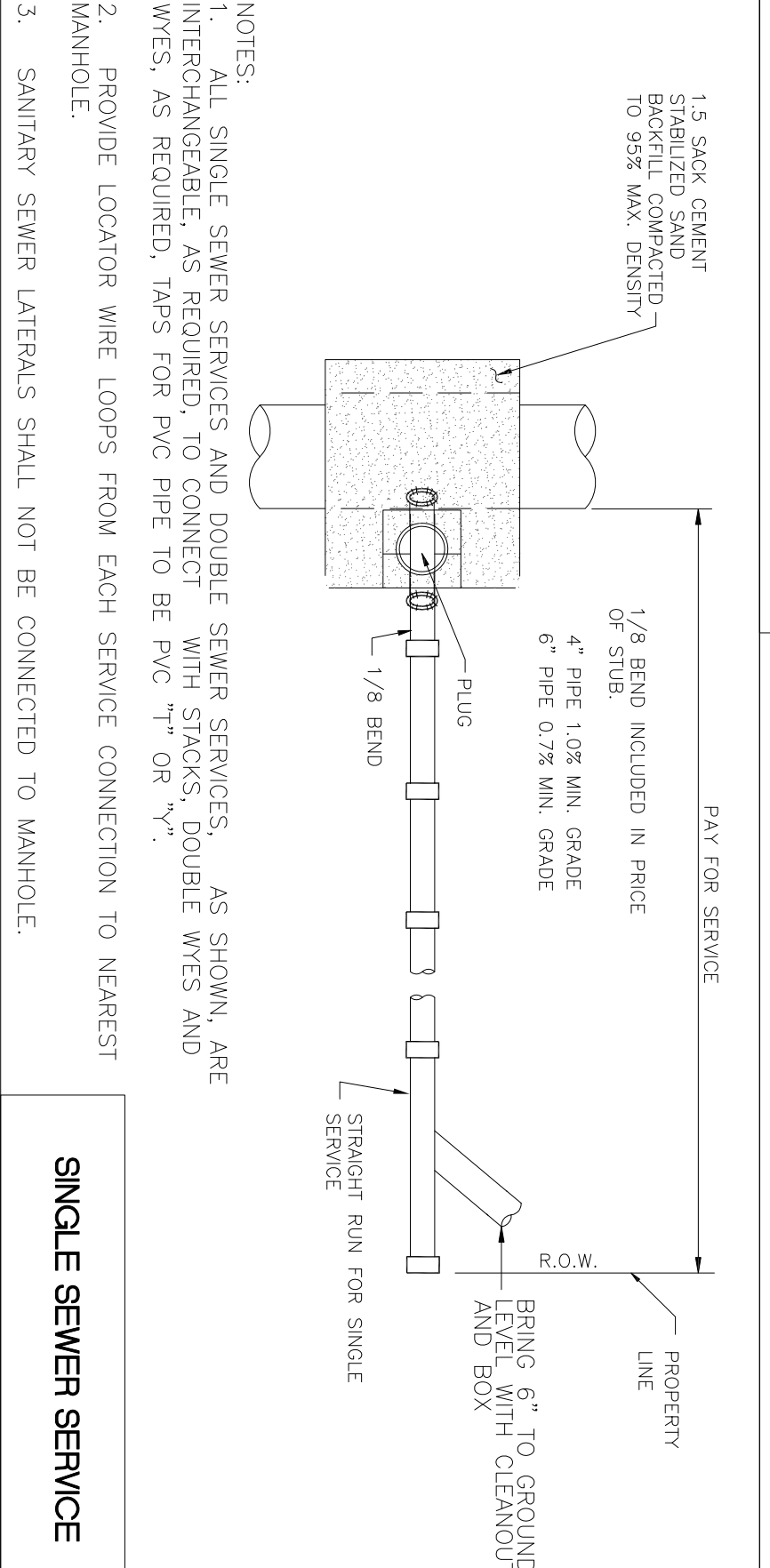
**DOUBLE SEWER SERVICE**



- NOTES:
1. ALL SANITARY SEWER SERVICES WILL BE BROUGHT TO WITHIN 4 TO 6 FEET OF FINISHED LOT GRADE ELEVATION AT PROPERTY LINE (RIGHT OF WAY).
  2. SEWER SERVICE LEADS SHALL NOT BE BACKFILLED UNTIL VISUALLY INSPECTED BY CITY INSPECTOR.
  3. SANITARY SEWER LATERALS SHALL NOT BE CONNECTED TO MANHOLE.

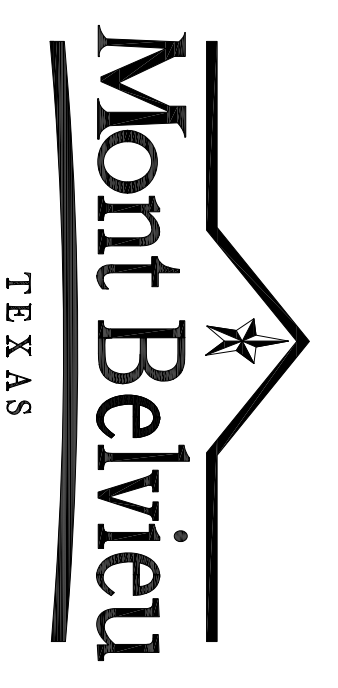


**CONCRETE COLLAR DETAIL FOR CONNECTING EXISTING MONOLITHIC SEWERS TO PIPE SEWERS**



**SINGLE SEWER SERVICE**

- NOTES:
1. ALL SINGLE SEWER SERVICES AND DOUBLE SEWER SERVICES, AS SHOWN, ARE INTERCHANGEABLE, AS REQUIRED, TO CONNECT WITH STACKS, DOUBLE WYES AND WYES, AS REQUIRED, TAPS FOR PVC PIPE TO BE PVC \"T\" OR \"Y\".
  2. PROVIDE LOCATOR WIRE LOOPS FROM EACH SERVICE CONNECTION TO NEAREST MANHOLE.
  3. SANITARY SEWER LATERALS SHALL NOT BE CONNECTED TO MANHOLE.



Scale: NTS  
Sanitary Sewer Standard Details  
DMG No. 200-03  
SHEET 3 OF 3